



## How Power BI can shape a resilient way forward for the Manufacturing Industry



Power BI

**Due to inherent complexities in manufacturing processes, Power BI capitalizes on converging large data & operations technology onto Real Time Insights & KPI centric Manufacturing dashboards.**

**Following are the benefits from Power BI:**

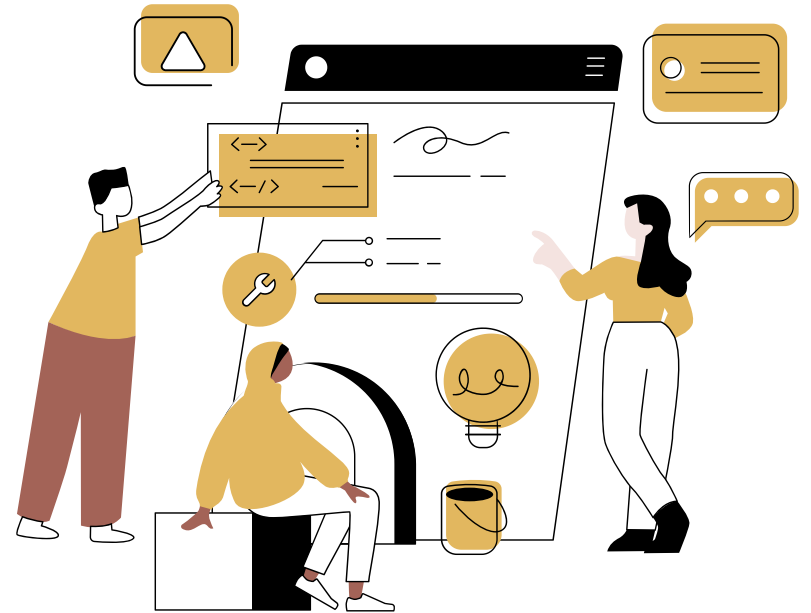
## **1) Optimizing Production Operations:**

**Power BI dashboards facilitates ongoing monitoring of production demand & capacity utilization, taking action on bottleneck process, idle time, shifts tracking, production life-cycle, scaling outsourcing options for increase in capacity & intelligence build up for Production Planning & Control (PPC).**

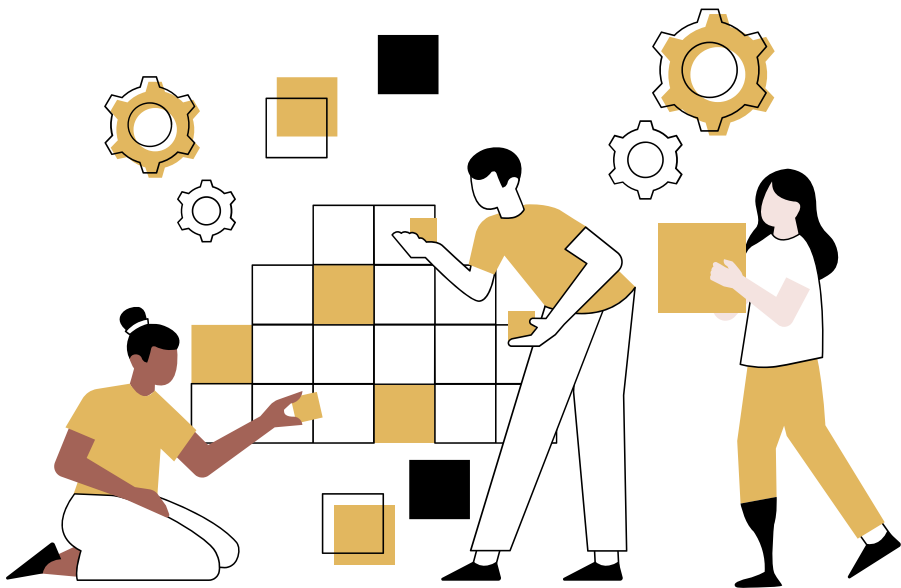


## 2) Scaling up Employee Efficiency

With Power BI, it is possible to have detailed measure & analysis of productivity of workers process wise with benchmarks & identify areas for improvising / training as well as controlling overtime / delay costs.



## 3) Inventory Control



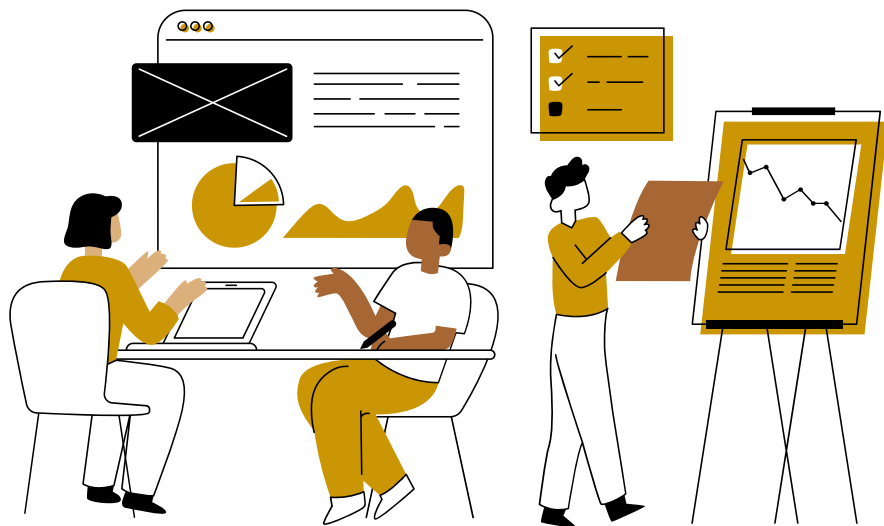
Power BI provides insights on yield of raw material & process losses, along with auto alerts on deficiencies or surplus in inventory supply chain, and also checks on inventory ageing & robust inventory accounting to minimize pilferages.

## 4) Machine Health & utilization

**Power BI dashboards enables reviewing of AMCs, upgrades, machine readings, availability of spare parts & accessories, down time monitoring, additions & disposals of machines.**



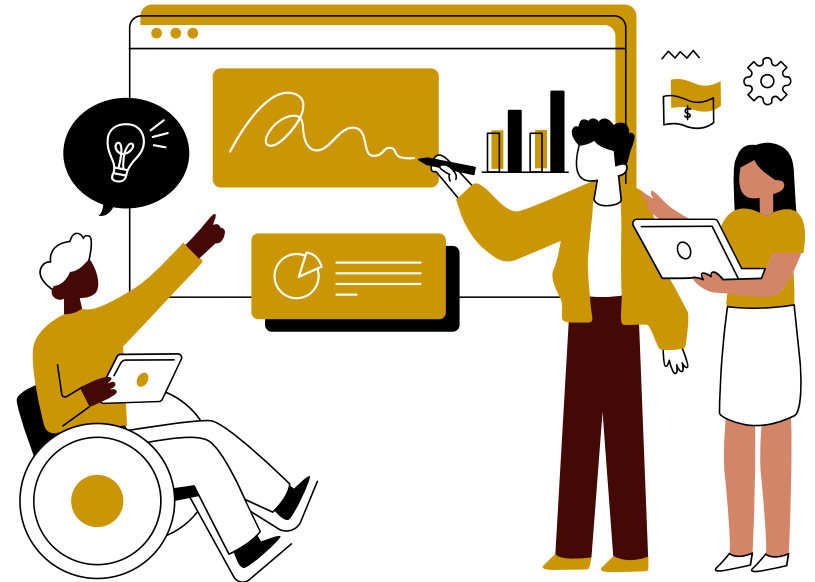
## 5) Quality Control & Assurance Management



**Set Quality Standards with in-depth analysis & QA reporting at material, process, product, supervisor, operator level. Power BI leads to improvising the quality related policies & procedures, root cause analysis to customer complaints. This leads to journey from Reactive QA to Proactive QA to finally Predictive QA.**

## 6) Optimizing sourcing & negotiation with Vendors

Rating of vendors & their reliability can be effectively monitored on dashboards based on cost competitiveness, quality, lead time, logistics, return/exchange policies, ability to meet large orders & variety or requirements etc.



## 7) ROI Enhancement



Power BI empowers to carry-out 360 degree performance evaluation of plants, cost economics, make or buy decisions, feasibility, operational profitability levels & variance analysis – at profit center levels & progress tracking of KPIs aligned to business targets.

[www.nimai-rama.com](http://www.nimai-rama.com)

## CONTACTS

Pankaj Mundra

Managing Partner

M: +971 50 856 0769

Email: [pankaj.mundra@nimai-rama.com](mailto:pankaj.mundra@nimai-rama.com)

Kapil Bansal

Partner

M: +91 97 69363338

Dubai: +971 50 359 2865

Email: [kapil@nimai-rama.com](mailto:kapil@nimai-rama.com)

 Power BI

**NIRA**  
Assurance | Advisory | Compliance | ERP & IT